



predibisa

O seu parceiro  
em gestão imobiliária

# Santa Clara Villa

Lugar do Moledo, Penajoia



# Index

<b>1</b>	<b>Location</b>	<b>03</b>
<b>2</b>	<b>General Information</b>	<b>05</b>
<b>3</b>	<b>Images</b>	<b>12</b>
<b>4</b>	<b>Plans</b>	<b>22</b>
<b>5</b>	<b>Contacts</b>	<b>26</b>

## Santa Clara Villa

Lugar do Moledo, Penajoia  
Lamego

**CE: Under Valuation**



predibisa

O seu parceiro  
em gestão imobiliária

## 1. Location

# 1. Location



Santa Clara Villa is on the left side of the Douro River, on the County of Lamego, Penajóia Parish, Moledo, Portugal.

Is in 15 km of the city of Lamego and about 10 km of Peso da Régua.

Is inside the demarcated area of Douro, on the sub-region of Baixo Corgo.



Is included at the Wine Region Classified as World Heritage By UNESCO.



predibisa

O seu parceiro  
em gestão imobiliária

## 2. General Information

## 2. General Information

Santa Clara Villa with around 3 hectares, habitation house, storage and housekeeper house with *cardenha* attaches.

Santa Clara Villa is composed by Urban and Rustic buildings:

### 1. Urban Buildings

- Habitation House
- Housekeepers House
- *Cardenha*
- Storage

### 2. Rustic Buildings

- Villa
- Santa Clara

## 2. General Information

### Main House

Habitation house

Constructed in 1945/46, under the project of the architect Amoroso Lopes, from Raúl Lino school, in the “Portuguese style” house. It is of stone and brick construction and has 3 floors, with a total of 182,40 m<sup>2</sup>:

**Ground Floor:** composed by a «storage»;

**1<sup>st</sup> floor:** fireplace room, 2 bedrooms and 1 complete bathroom;

**2<sup>nd</sup> floor:** fireplace common room, cup, kitchen, 4 bedrooms, 1 office, 1 complete bathroom and 2 storages.

At the 2<sup>nd</sup> floor level, the house possesses a balcony over the Douro River and a patio with about 80m<sup>2</sup>. There is a zone with tank for washing and drying clothes.



## 2. General Information

### Housekeepers House

Habitation house for the housekeepers.

Build in an unknown date on the 19<sup>th</sup> century, the house has two floors, a covered area of 161 m<sup>2</sup> and its construction is in stone and wall. Patio with 250 m<sup>2</sup>.

**Ground Floor:** composed by 1 «storage»;

**1<sup>st</sup> floor:** with kitchen, common area, 2 bedrooms and 1 bathroom.

It has a small farmyard in front and in the back 3 terraces with garden, vegetable garden and orchard, in a total of 250m<sup>2</sup>.

It has an annex with an old construction, in ruins, that, according with the legend used to be the lodge or medieval «hospitals» of Moledo.





## 2. General Information

### *Cardenha*

Stone house, in ruins, with two floors («storage» and bedroom) and 25 m2 area.



## 2. General Information

### Warehouse

Stone building, built in 1911, with 312 m<sup>2</sup>, having, in the interior, three stone mills and a distillery.

It has a patio with 3.381 m<sup>2</sup> and a water mine that provides the main and the housekeepers house.



## 2. General Information

### **RUSTIC BUILDINGS**

#### **Villa**

The farm itself has a rustic area of about 28.000m<sup>2</sup>, being planted as follows:

- About 2.000 vine of the Douro region, classified with the letter B and about 800l annual benefit;
- About 500 Cherry trees.

The remaining land is occupied with gardens and other fruit trees.

#### **Santa Clara**

Terrace with 125m<sup>2</sup>, stone wall, with 1 threshing floor with a small stone house and orange trees.



predibisa

O seu parceiro  
em gestão imobiliária

## 3. Images



### 3. Images



### 3. Images





### 3. Images



### 3. Images





### 3. Images





### 3. Images



### 3. Images





### 3. Images



### 3. Images





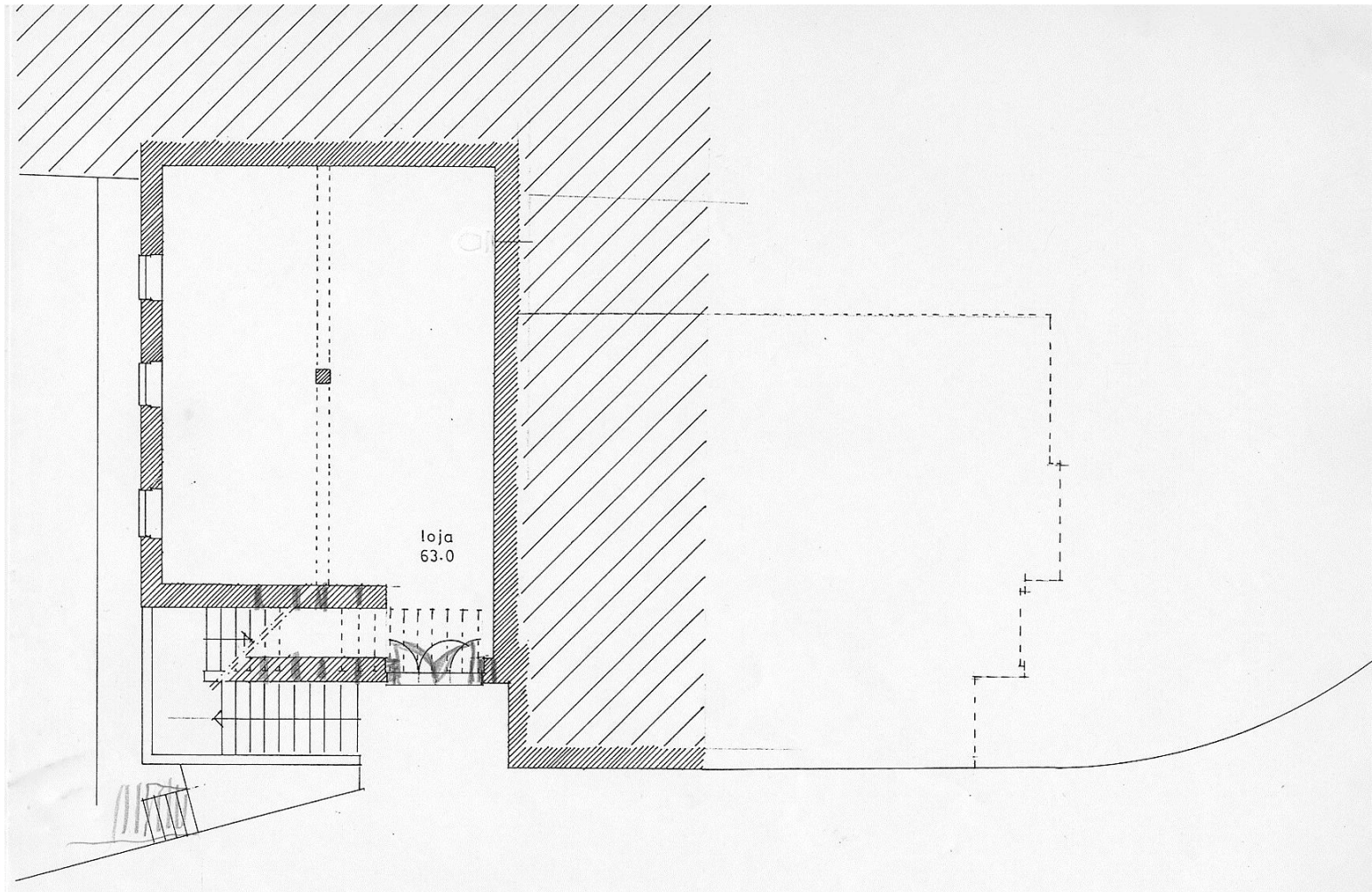
predibisa

O seu parceiro  
em gestão imobiliária

## 4. Plans

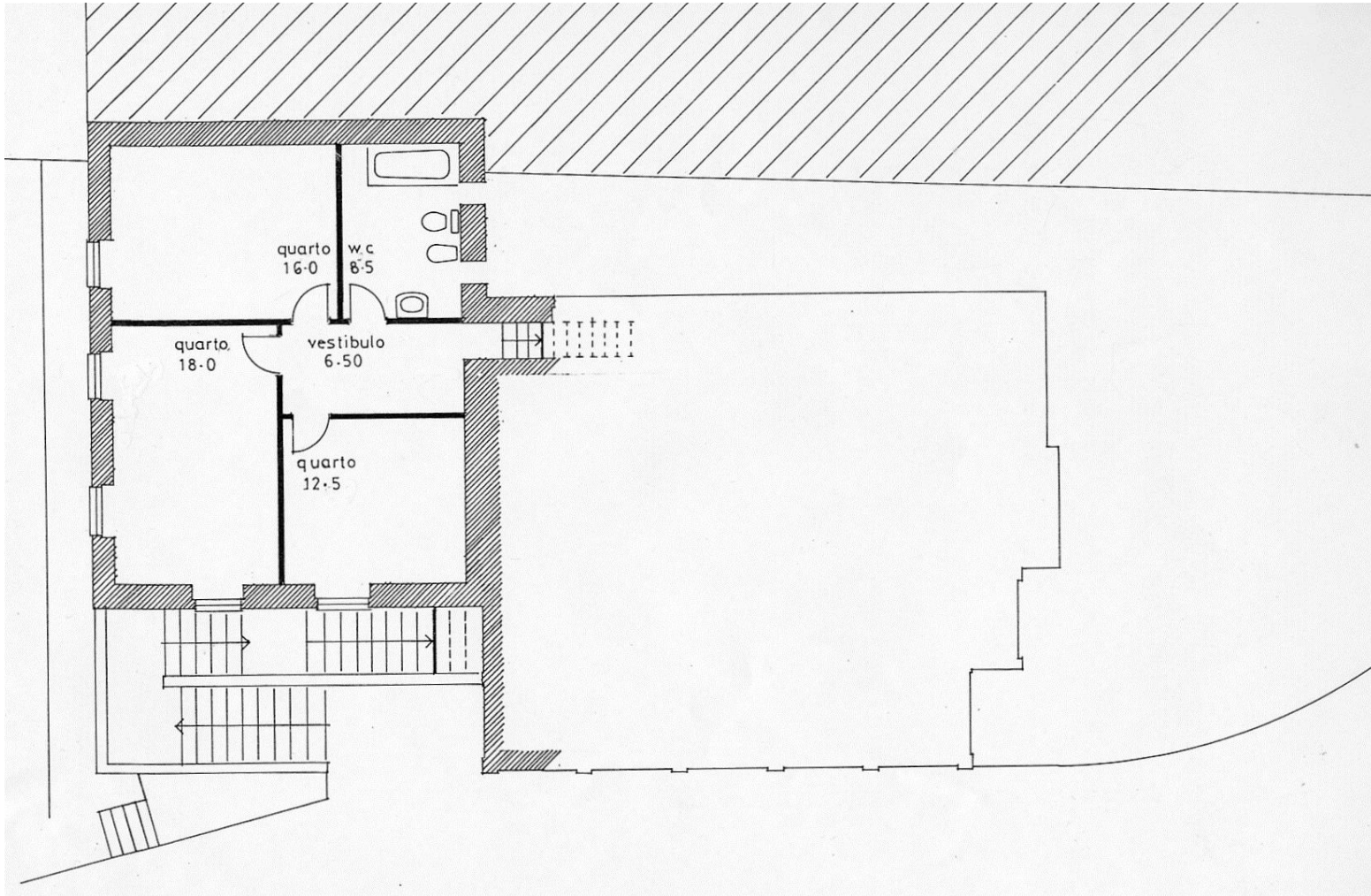


## 4. Plans



Store Plan

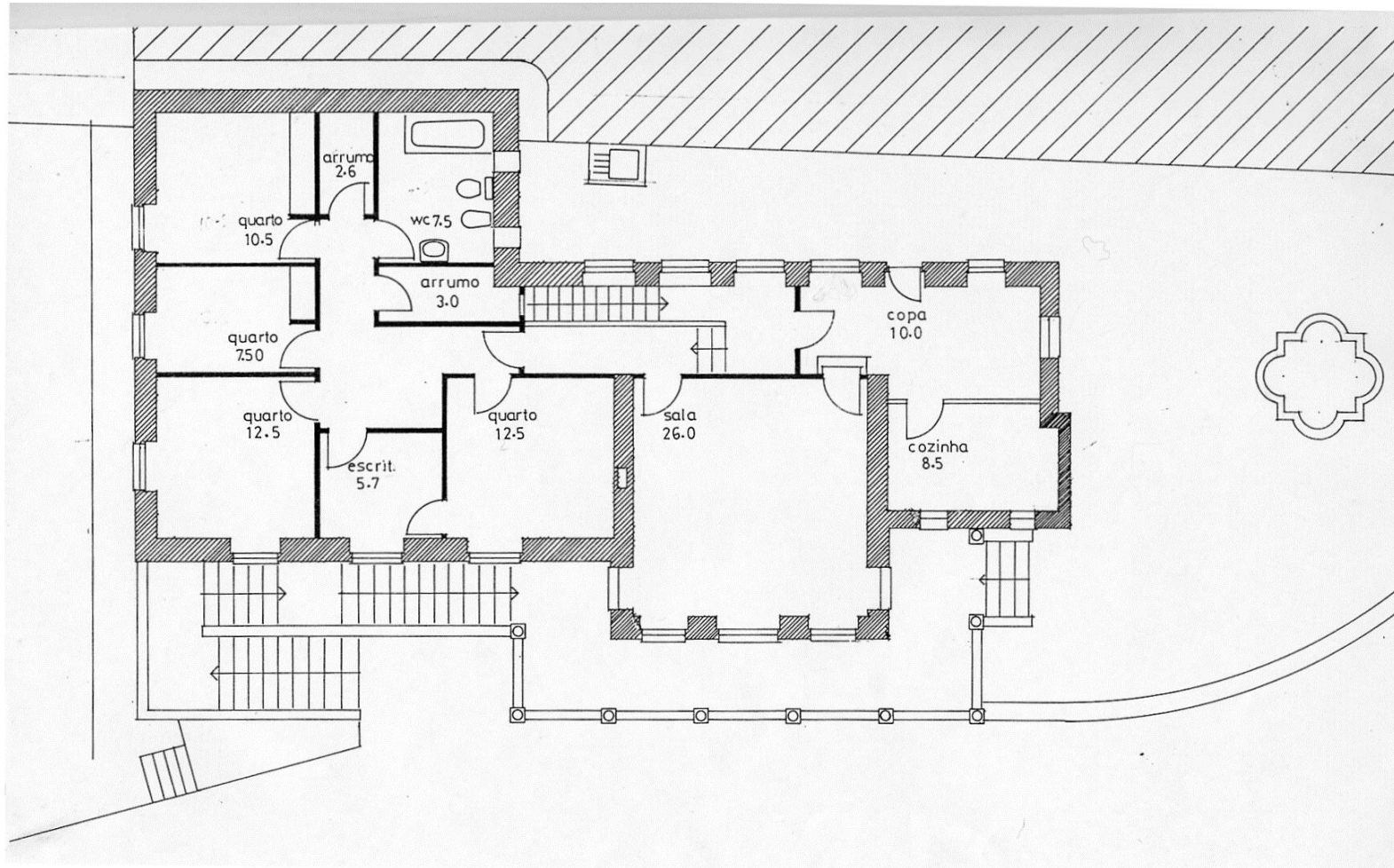
## 4. Plans



Basement Plan



## 4. Plans



Ground Floor Plan



predibisa

O seu parceiro  
em gestão imobiliária

## 5. Contacts

## 5. Contacts



### Office | Aviz – Porto

**Predibisa – Sociedade de Mediação Imobiliária, Lda.**

**Rua José Gomes Ferreira, 117 | 4150-442 Porto**

**T + 351 226 167 240**

**F + 351 226 167 249**

**[www.predibisa.com](http://www.predibisa.com)**

### Office | Baixa do Porto

**Predibisa – Sociedade de Mediação Imobiliária, Lda.**

**Rua das Flores, 259 | 4050-267 Porto**

**T + 351 222 081 827**

**T + 351 912 224 073**

**[www.predibisa.com](http://www.predibisa.com)**



predibisa